

Features

- ✧ A pair of output contacts, open in normal state, close all the time when alarming.
- ✧ Scattering technology.
- ✧ Innovative sensing chamber, insect proof, dust proof and anti-interference of external rays.

Description

R6601 Conventional Smoke Detector is non-addressable. The detector adopts infrared emitting diode and photodiode as its sensor. In normal condition, the photodiode only receives very weak signal. When smoke particles of a fire enter the detector, the received signal increases; when it passes the alarm threshold, it will alarm out, light alarm indicator and drive output relay to act. To reduce power consumption, the IR diode works intermittently.

The detector is developed from sensing chamber by scattering technology. Besides stable performance and simple maintenance, the detector has the ability to resist dust contamination and environmental light.

Connection and Cabling

Fig. 1 shows the detector bottom and Fig. 2 the base.

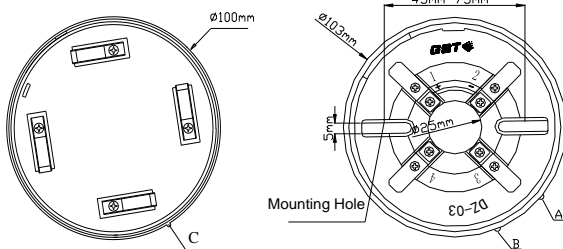


Fig. 1

Fig. 2

There are four conducting pieces on the base, each carrying a terminal with number. Terminal "2" and "4" are connected with the power, polarity-insensitive. "1", "3" connects with relay output.

Recommended Cabling

Adopt 1.0mm² or above fire cable, subject to local codes.



Installation

A fixed installation direction is ensured by the location elements on the detector and the base. Fix the base with two tapping screws, and then align mark C on the detector with A on the base, rotate the detector to align mark C with mark B (Refer to Fig. 1 and 2 for the position of the marks), the detector will be fitted to the base.

Fig. 3 shows the mounting of the detector.

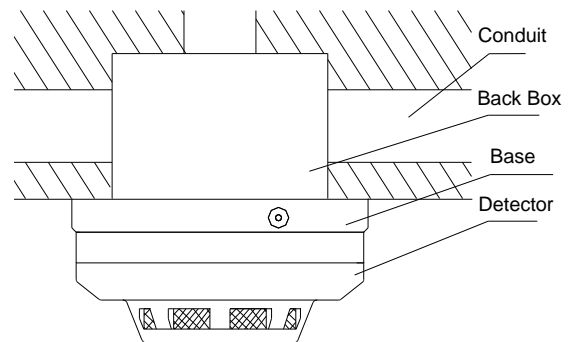


Fig. 3

Application

It can work when connected to 12VDC power.

Specification

Operating Voltage	12VDC (9.6VDC~14.4VDC)
Standby Current	≤1mA
Alarm Current	≤20mA
Indicator	Red. Quiet in polling. Illuminates in alarming.
Alarm Clear	Instantaneous Power-off (5s MAX, 2.5VDC MAX)
Power-up Time	≤10s
Output control type	Volt-free normally open, Keep closed after alarming
Output capacitance	30VDC/1A
Ingress Protection Rating	IP23
Environmental Temperature	-10°C~+50°C
Relative Humidity	≤95%, non condensing
Material and Color of Enclosure	ABS, white (RAL 9016)
Dimensions	Diameter 100mm Height 56mm (with base)
Mounting Hole Distance	45mm~75mm
Weight	About 120g

Accessories and Tools

Model	Name	Remark
DZ-03	Base	Order separately

Maintenance

✧ The detector should be installed just before commission and kept well before installation, taken corresponding measures for dust-proof, damp-proof and corrosion-proof.

✧ The dust cover cannot be removed until the project has been plunged into usage. Otherwise the detector can't alarm normally.

✧ Clean the detector at least once a year to ensure normal operation of the system.

✧ If nuisance alarms are often found of the detector on site, the sensing chamber should be cleaned and replaced when necessary.

✧ Before cleaning the detector, notify the proper authorities that the system is undergoing maintenance and will temporarily be out of service. Disable the zone or system undergoing maintenance to avoid unwanted alarms.

Cleaning:

a) Open the top cover of detector, and draw out the sensing chamber by slightly shaking it by hand.

b) Clean the sensing chamber by alcohol cotton swab clipped by tweezers, and also by clear water and brush. Please note not to leave any cotton in the chamber.

c) Install the sensing chamber and top cover back.

✧ The detector should be tested again after cleaning and reinstallation.

✧ Fire simulation test should be made to the detector at least once half a year.

Limited Warranty

GST warrants that the product will be free of charge for repairing or replacing from defects in design, materials and workmanship during the warranty period. This warranty doesn't cover any product that is found to have been improperly installed or used in any way not in accordance with the instructions supplied with the product. Anybody, including the agents, distributors or employees, is not in the position to amend the contents of this warranty. Please contact your local distributor for products not covered by this warranty.

This Data Sheet is subject to change without notice. Please contact GST for more information or questions.

Gulf Security Technology Co., Ltd.

No. 80, Changjiang East Road, QETDZ, Qinhuangdao, Hebei, P. R. China 066004

Tel: +86 (0) 335 8502434 Fax: +86 (0) 335 8502532

service.gst@fs.utc.com www.gst.com.cn